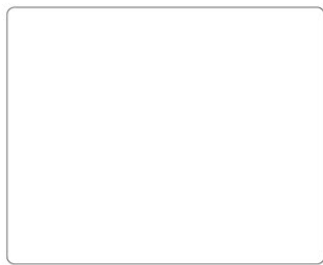


<b>Uniclass</b>			
L2226:D941			
<b>CI/SfB</b>			
994:941		x	

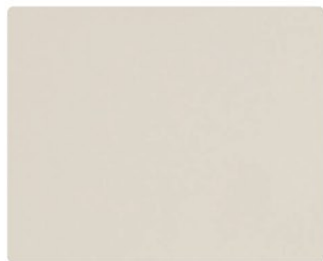
Compact and HPL



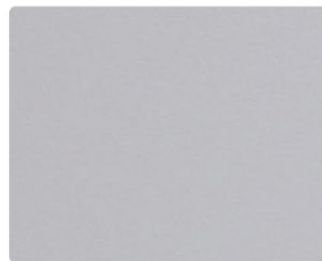
# COLORSINTESI (PLAIN COLOURS - COMPACT AND HPL)



0001 LRV 82



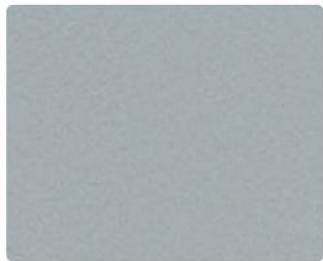
0204 LRV 75



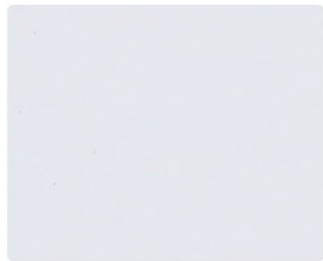
0211 LRV 43



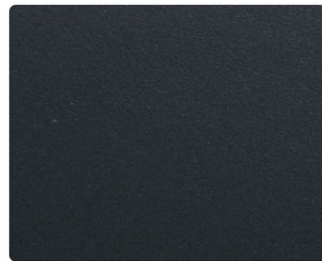
0218 LRV 62



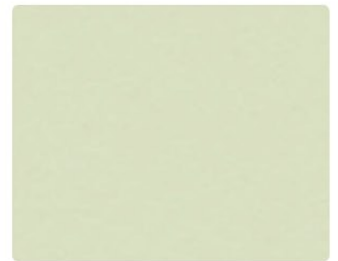
0234 LRV 25



0273 LRV 65



0509 LRV 0.37



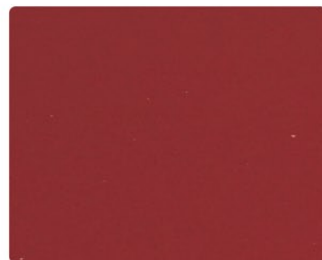
0517 LRV 61



0527 LRV 52



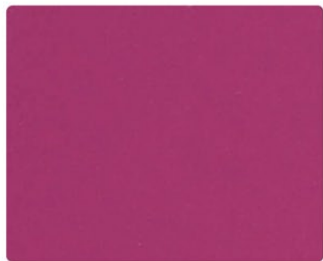
0561 LRV 10



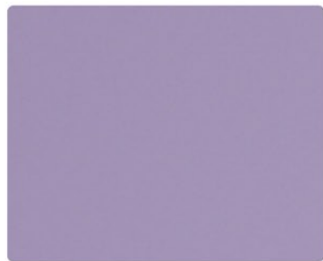
0571 LRV 4



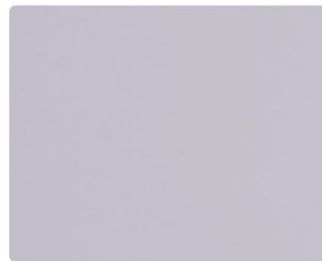
0593 LRV 5



0594 LRV 9



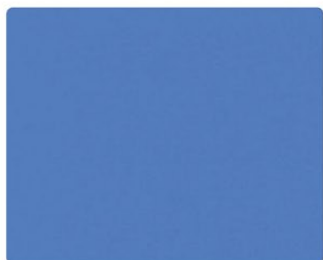
0605 LRV 31



0606 LRV 51



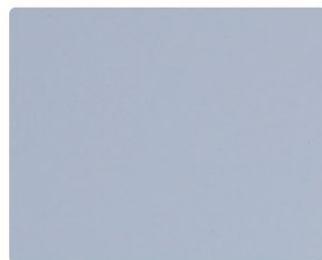
0607 LRV 29



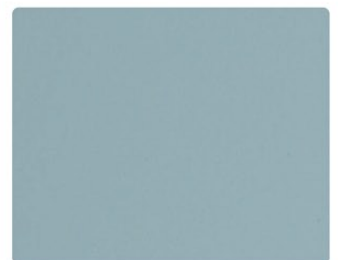
0619 LRV 13



0623 LRV 8



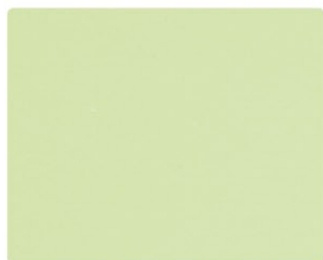
0641 LRV 45



0644 LRV 36



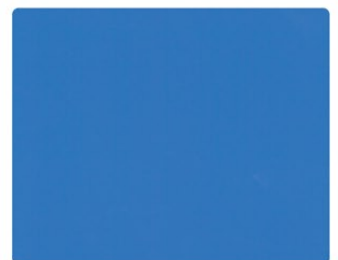
0647 LRV 51



0660 LRV 43



0682 LRV 38



0711 LRV 12

## WOODS (COMPACT AND HPL)



1852

LRV 38



4325

LRV 24



4327

LRV 61



4390

LRV 20



4456

LRV 4



4520

LRV 37



4521

LRV 53

## MATERIC EXPRESSIONS

(PATTERNS AND SPECKLES -  
COMPACT AND HPL)



0997

LRV 4



1017

LRV 27



3192

LRV 15



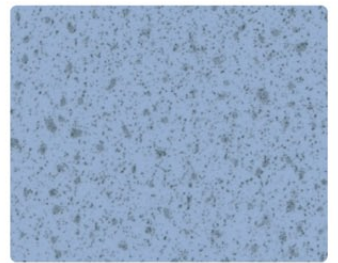
3194

LRV 63



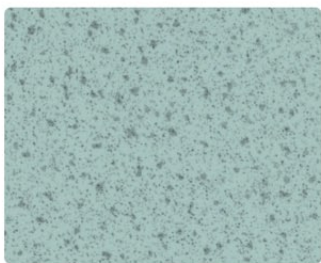
3283

LRV 35



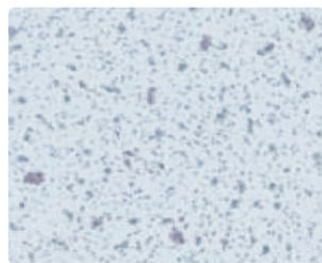
9131

LRV 25



9133

LRV 30



9134

LRV 50



9135

LRV 42

### Surface Finish

All decors are manufactured with an **Erre (R)** surface texture, allowing Compact and HPL to be utilized together with ease and in harmony.

**Erre (R)** is an easy to clean, smooth to the touch, surface with a very slight texture.

### Fire Classification

All Arpa Athlon decors in Compact grade (CGS) achieve Euroclass C as standard.

On request FR Grade (CGF) will achieve Euroclass B.

(Please note this is special production and subject to lead times)  
For HPL fire classification please refer to Arpa UK for advice on achieving the highest classification for composite panels.

# ATHLON | CUBICLE AND WASHROOM COLLECTION

## Cubicle and Locker Components:

- Partitions / Wall Panels
- Cubicle or Locker Doors
- Pilasters
- IPS Panels
- Shower Panelling
- Vanity Unit Panelling

Compact 12.7 mm. The ultimate material choice for the most demanding applications. High impact strength and water resistance.

Thin HPL 0.8 mm. Flexibility of edge design - Postformed or Square and use of different core substrates allows limitless design.

Thin HPL and Compact are made of:

≈70%  
Paper

≈30%  
Thermosetting  
Resins



Excellent moisture resistance



Great impact resistance



Scratch and wear-resistant



Light fastness



Ease of maintenance and cleaning



Hygiene

Most important characteristics according to EN 438 classification for both Compact and HPL material.

Compact 12.7 mm

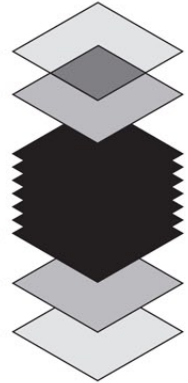
Overlay (Only for printed decors)

Decorative Paper

Black Core

Decorative Paper

Overlay (Only for printed decors)

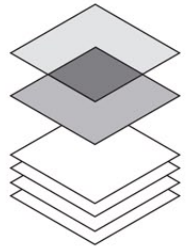


Thin HPL 0.8 mm.

Overlay (Only for printed decors)

Decorative Paper

Kraft Paper



## Cubicle Optimisation / DDA Regulations.

As market trends lead the way towards higher and deeper cubicle dimensions for privacy and general comfort, the Athlon Washroom Collection is a perfect specification choice for Architectural Interior Design and System Manufacturer specifications enabling high yield and minimal material waste from the raw material.

### Access to Public Buildings:

Washroom specifications are affected by the Access to Public Buildings (2004) Disability Discrimination Act) in two distinct areas.

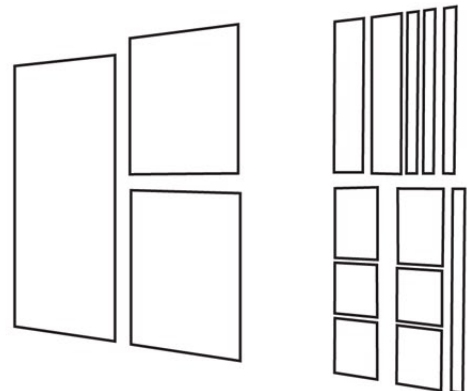
### Cubicle dimensions for the disabled:

The Athlon Washroom Collection is manufactured as standard in very large format sheets facilitating compliance with the Act which specifies that there should be at least a 450mm gap between an in swinging toilet cubicle door and the adjacent toilet pan.

### Visual awareness:

To assist the partially sighted visual contrasts between adjacent surfaces in a washroom environment is necessary. This contrast is measured by the Light Reflectance Value (LRV) of colours as noted in the product availability chart. To ensure adjacent surfaces such as doors and pilasters are easily detected, the Act specifies that there should be clear separation of 30 LRV points between the two surface colours.

Large format sheets allow greater yield with minimum material wastage



Code	Name	LRV	Compact 12.7 mm				HPL 0.8 mm PF			Colour referencing			Edge banding referencing		
			2150x1850* (mm)	4300x1850 (mm)	4200x1600 (mm)	3050x1300 (mm)	RAL	Pantone	NCS	Rehau ABS	Rehau Express	Döllken			
<b>COLORSINTESI (PLAIN COLOURS)</b>															
0001	Bianco	82	■	■	■	■	9016	10A01(BS)	S 0500-N	RAL 9010	91470/14	SF6346			
0204	Magnolia	75	■	■	■	■		S 0505-Y20R			65661/14	SF0711			
0211	Grigio Perla	43	■	■	■	■	7038	428U	S 2502-B		68117/18	SF4861			
0218	Beige	62	■	○	■	■	1015	468U	S 1010-Y30R	94529/14	13749/14	SF561D			
0234	Grafite	25	■	■	■	■	7004	430U	S 4502-B	62906	68005/14	SF315E			
0273	Azzurro Ice	65	■	○	■	■	7047		S 1010-R80B		77177/13				
0509	Nero	0.37	■	■	■	■	9004	Black C	S 9000-N		76971/33	SF0101			
0517	Verde Malva	61	■	■	■	■	6019	579C	S 1020-G40Y		69346/18	SF617A			
0527	Grigio Argento	52	■	○	■	■	7047	427U	S 1500-N	67151	98474/14	SF1330			
0561	Rosso Devil	10	■	○	■	■	3020	186C	S 1080-Y90R	76525	76961/13	SF447C			
0571	Rosso Oriente	4	■	○	■	■	3003	195C	S 2570-R	95425/18	RAL 3003	SF404C			
0593	Blue Faenza	5	■	■	■	■	5010	287U	S 4050-R80B	RAL 5010	97486/14	SF0436			
0594	Fucsia	9	■	○	■	■	4006	247U	S 2060-R30B	77351		SF0179			
0605	Glicine	31	■	○	■	■		529U	S 2040-R50B		62527				
0606	Lilla	51	■	○	■	■		263C	S 0525-R60B		77005/13				
0607	Lavanda	29	■	○	■	■		543U	S 2030-R90B	62907	77193	SF119A			
0619	Blu Artico	13	■	○	■	■		2781C	S 2060-R70B		61498/13	SF482B			
0623	Grigio Ferro	8	■	■	■	■		432U	S 7500-N	99531	95740/14	SF089A			
0641	Crocus	45	■	■	■	■		277U	S 1020-R80B		1315E				
0644	Turchese Pastello	36	■	○	■	■	6034	5493U	S 2020-B50G		19618/14	SF5993			
0647	Giallo Bisanzio	51	■	○	■	■	1018	129C	S 0580-Y		13317/18	SF556B			
0660	Verde Acido	43	■	○	■	■		375C	S 0570-G30Y		61753	SF40A1			
0682	Arancio	38	■	○	■	■		1375C	S 0570-Y50R	1983E	15481/14	SF261D			
0711	Blu Baia	12	■	■	■	■	5015		S 3050-R90B		77092/13				
<b>WOODS</b>															
1852	Faggio Giapponese	38	○	○	○	■					579E/13				
4325	Noce Coloniale	24	○	○	○	■				516V/00					
4327	Apero Italiano	61	○	○	○	■					4919/01				
4390	Zebrano Naturale	20	■	■	■	■				340V		DC346P			
4456	Rovere Zadar	4	■	■	■	■				735V	1146W/33	DC12LO			
4520	Rovere Asburgo Naturale	37	■	■	■	■				731V					
4521	Frassino Americano	53	■	■	■	■				1440W/01					
<b>MATERIC EXPRESSIONS (PATTERNS AND SPECKLES)</b>															
0997	Selenio Nero	4	■	■	■	■									
1017	Selenio Silver	27	■	■	■	■				670E					
3192	Copperfield Grigio	15	■	○	■	■					5914				
3194	Colorlam Bianco	63	■	○	■	■									
3283	Abstract Aluminium	35	■	○	■	■					5363/00				
9131	Spot Lavanda	25	■	■	■	■									
9133	Spot Turchese Pastello	30	■	■	■	■									
9134	Spot Azzurro Ice	50	■	■	■	■									
9135	Spot Lilla	42	■	■	■	■									

\*2150mm is nominal as cutting tolerances will apply.

○ Please check availability.

The LRV shown in this table have been measured in the Arpa Industriale Laboratory, in accordance with EN 13721/04.

RAL, NCS & Pantone references are the nearest equivalents and should be verified visually.  
Rehau Express closest stocked range.  
ABS references on order only.



**Greenguard - Indoor Air Quality - Guaranteed**

The GREENGUARD Environmental Institute is an industry independent, third-party certification organization that qualifies products for low chemical emissions (VOC's).

Arpa high pressure laminates have been certified according to the GREENGUARD Indoor Air Quality Certification Program and the higher GREENGUARD Children & Schools Certification Program.

### Relevant NBS Specification Clauses

- K13 Rigid Sheet fine linings / panels
- K30 Panel Partitions
- K32 Panel Cubicles
- L20 Doors
- N10 General Fixtures & Fittings

### Disclaimer

The disclaimer that follows is a summary of the applicable full disclaimer (which can be found on arpaindustriale.com). The information provided by Arpa Industriale S.p.A. ("Arpa") in this document is solely indicative. Arpa is unable to warrant the accuracy and completeness of this information. No rights can be derived from the information provided; the use of the information is at the other party's risk and responsibility. This document does not guarantee any properties of Arpa's products. Arpa does not warrant that the information in this document is suitable for the purpose for which it is consulted by the other party. The document does not contain any design, structural calculation, estimate or other warranty or representation that customers and third parties may rely on. Colours included in Arpa's communications (including but not limited to printed matter) and in samples of Arpa's products may differ from the colours of the Arpa's products to be supplied. Arpa's products and samples are produced within the specified colour tolerances and the colours (of production batches) may differ, even if the same colour is used. The viewing angle also influences the colour perception. Customers

and third parties must have a professional adviser inform them about (the suitability of) the Arpa's products for all desired applications and about applicable laws and regulations. Arpa reserves the right to change (the specifications for) its products without prior notice. To the maximum extent permitted under applicable law, Arpa is not liable (neither contractual nor non-contractual) for any damage arising from or related to the use of this document, except if and to the extent that such damage is the result of wilful misconduct or gross negligence on the part of Arpa and/or its management. All oral and written statements, offers, quotations, sales, supplies, deliveries and/or agreements and all related activities of Arpa are governed by the General Terms and Conditions of Arpa Industriale S.p.A. All oral and written statements, offers, quotations, sales, supplies, deliveries and/or agreements and all related work of Arpa USA Inc. ("Arpa USA") are governed by the Arpa USA General Terms and Conditions of Sale. All intellectual property rights and other rights regarding the content of this document (including logos, text and photographs) are owned by Arpa and/or its licensors.

Samples  
within  
**48** hrs

Sample Line  
+44 (0) 1782332368

**Arpa UK Ltd**

Block 3, Parkhall Business Village,  
Park Hall Road, Longton  
Stoke-On-Trent ST3 5XA – Great Britain  
Tel. +44 (0)1782 332 368  
Fax +44 (0)1782 331876  
E-mail: [arpauk@arpaindustriale.com](mailto:arpauk@arpaindustriale.com)